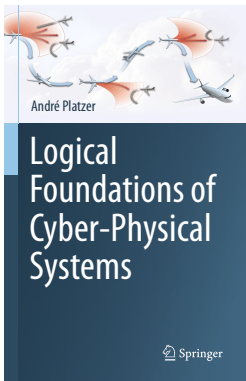


02: Differential Equations & Domains

Logical Foundations of Cyber-Physical Systems



André Platzer

Karlsruhe Institute of Technology
Department of Informatics

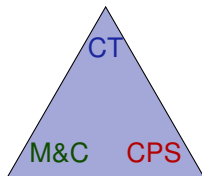
Computer Science Department
Carnegie Mellon University

- 1 Learning Objectives
- 2 Introduction
- 3 Differential Equations
- 4 Examples of Differential Equations
- 5 Domains of Differential Equations
 - Terms
 - First-Order Formulas
 - Continuous Programs
- 6 Summary



- 1 Learning Objectives
- 2 Introduction
- 3 Differential Equations
- 4 Examples of Differential Equations
- 5 Domains of Differential Equations
 - Terms
 - First-Order Formulas
 - Continuous Programs
- 6 Summary

semantics of differential equations
descriptive power of differential equations
syntax versus semantics



continuous dynamics
differential equations
evolution domains
first-order logic

continuous operational effects

- 1 Learning Objectives
- 2 Introduction**
- 3 Differential Equations
- 4 Examples of Differential Equations
- 5 Domains of Differential Equations
 - Terms
 - First-Order Formulas
 - Continuous Programs
- 6 Summary

Example (Vector field and one solution of a differential equation)

$$\begin{pmatrix} y'(t) = f(t, y) \\ y(t_0) = y_0 \end{pmatrix}$$

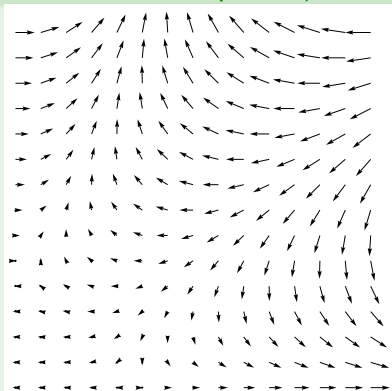
Intuition:

Example (Vector field and one solution of a differential equation)

$$\begin{cases} y'(t) = f(t, y) \\ y(t_0) = y_0 \end{cases}$$

Intuition:

- At each point in space, plot the value of RHS $f(t, y)$ as a vector

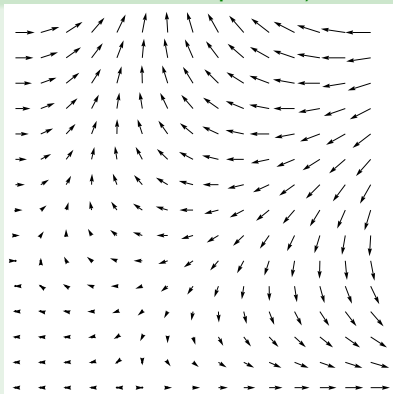


Example (Vector field and one solution of a differential equation)

$$\begin{cases} y'(t) = f(t, y) \\ y(t_0) = y_0 \end{cases}$$

Intuition:

- 1 At each point in space, plot the value of RHS $f(t, y)$ as a vector
- 2 Start at initial state y_0 at initial time t_0

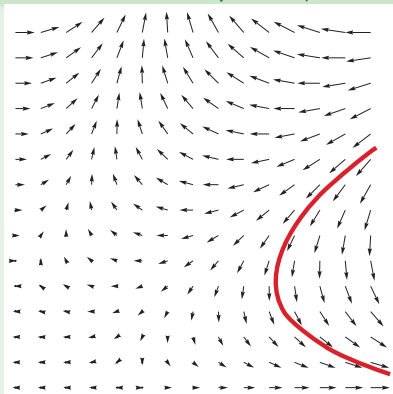


Example (Vector field and one solution of a differential equation)

$$\begin{cases} y'(t) = f(t, y) \\ y(t_0) = y_0 \end{cases}$$

Intuition:

- 1 At each point in space, plot the value of RHS $f(t, y)$ as a vector
- 2 Start at initial state y_0 at initial time t_0
- 3 Follow the direction of the vector

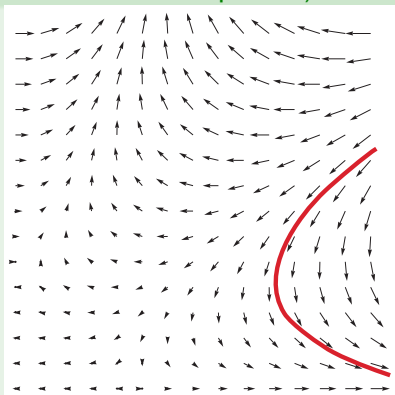


Example (Vector field and one solution of a differential equation)

$$\begin{cases} y'(t) = f(t, y) \\ y(t_0) = y_0 \end{cases}$$

Intuition:

- 1 At each point in space, plot the value of RHS $f(t, y)$ as a vector
 - 2 Start at initial state y_0 at initial time t_0
 - 3 Follow the direction of the vector
- The diagram should really show infinitely many vectors ...

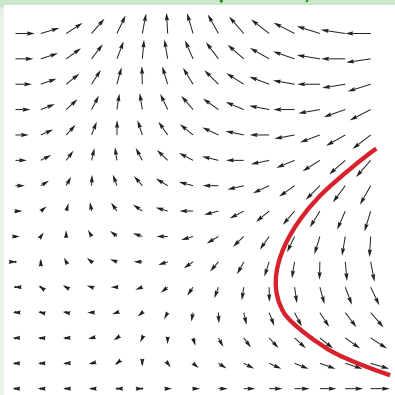


Example (Vector field and one solution of a differential equation)

$$\begin{cases} y'(t) = f(t, y) \\ y(t_0) = y_0 \end{cases}$$

Intuition:

- 1 At each point in space, plot the value of RHS $f(t, y)$ as a vector
 - 2 Start at initial state y_0 at initial time t_0
 - 3 Follow the direction of the vector
- The diagram should really show infinitely many vectors ...



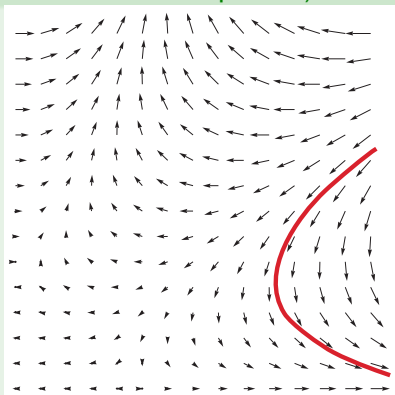
Your car's ODE: $x' = v, v' = a$

Example (Vector field and one solution of a differential equation)

$$\begin{cases} y'(t) = f(t, y) \\ y(t_0) = y_0 \end{cases}$$

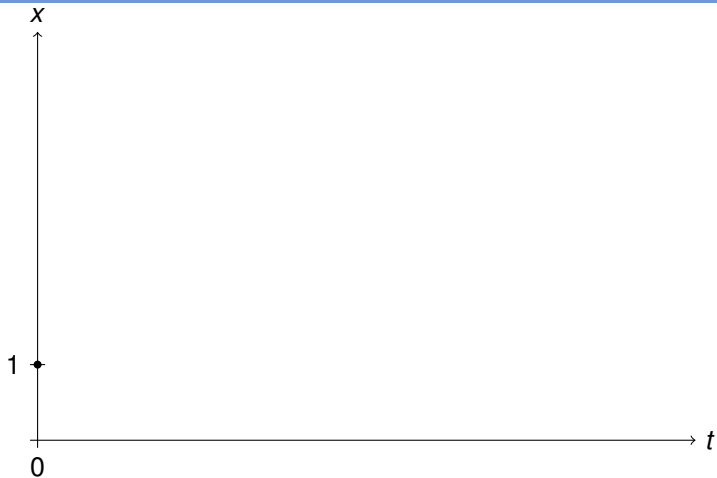
Intuition:

- 1 At each point in space, plot the value of RHS $f(t, y)$ as a vector
 - 2 Start at initial state y_0 at initial time t_0
 - 3 Follow the direction of the vector
- The diagram should really show infinitely many vectors ...

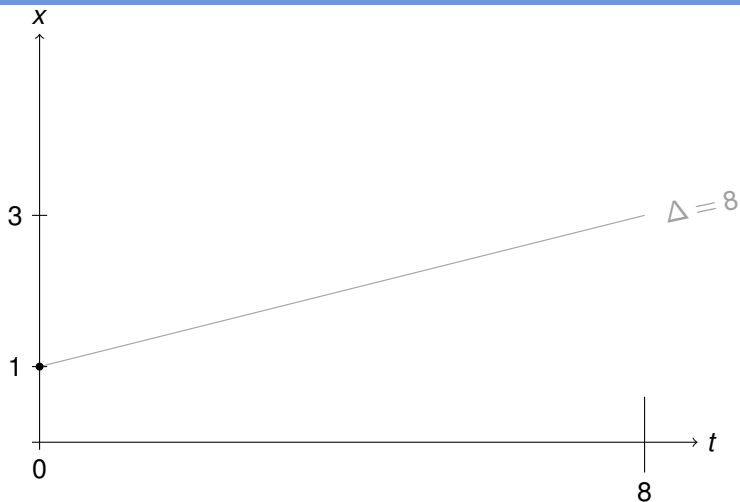


Your car's ODE: $x' = v, v' = a$

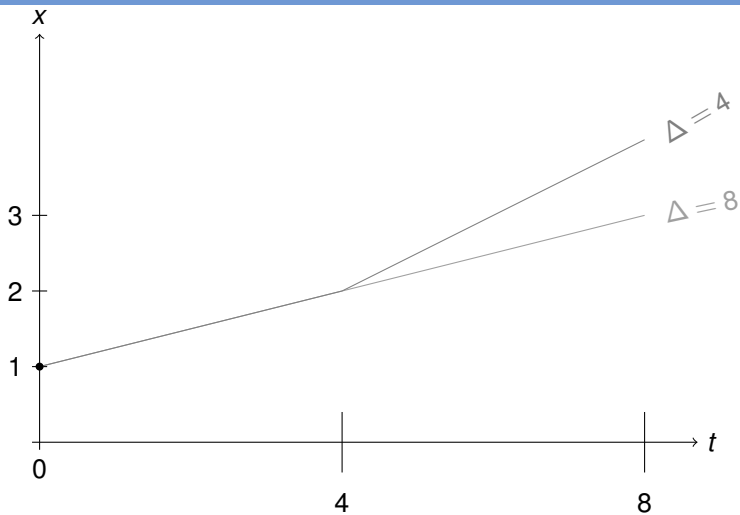
Well it's a wee bit more complicated



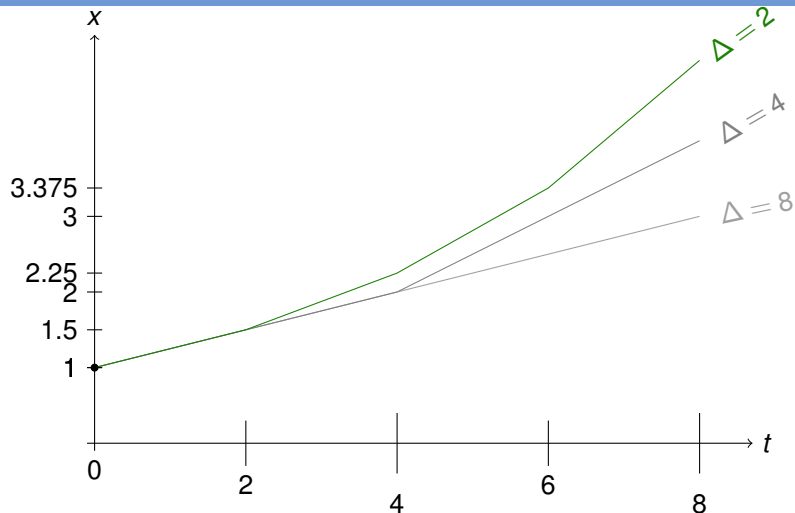
$$\begin{pmatrix} x'(t) = \frac{1}{4}x(t) \\ x(0) = 1 \end{pmatrix}$$



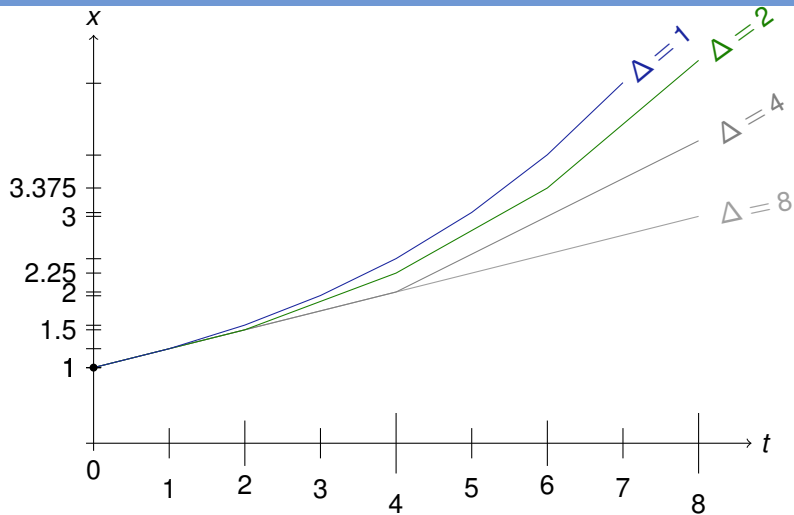
$$\left(\begin{array}{l} x'(t) = \frac{1}{4}x(t) \\ x(0) = 1 \end{array} \right) \rightsquigarrow \left(\begin{array}{l} x(t + \Delta) := x(t) + \frac{1}{4}x(t)\Delta \\ x(0) := 1 \end{array} \right)$$



$$\left(\begin{array}{l} x'(t) = \frac{1}{4}x(t) \\ x(0) = 1 \end{array} \right) \rightsquigarrow \left(\begin{array}{l} x(t+\Delta) := x(t) + \frac{1}{4}x(t)\Delta \\ x(0) := 1 \end{array} \right)$$

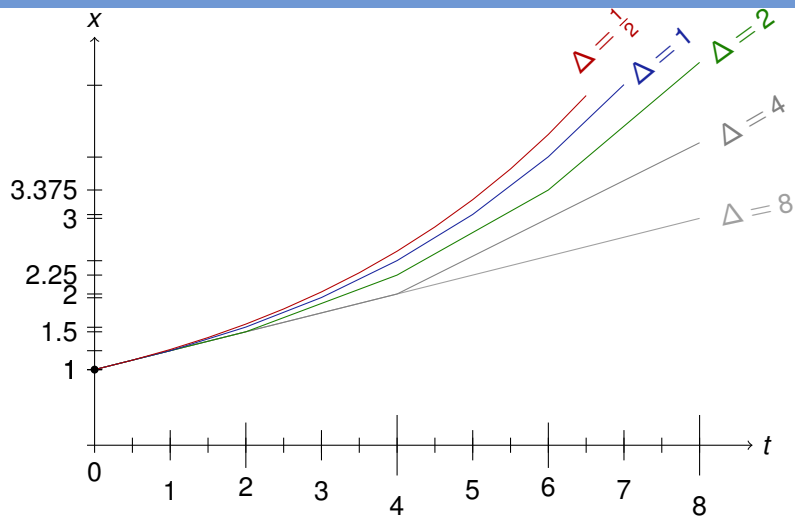


$$\left(\begin{array}{l} x'(t) = \frac{1}{4}x(t) \\ x(0) = 1 \end{array} \right) \rightsquigarrow \left(\begin{array}{l} x(t+\Delta) := x(t) + \frac{1}{4}x(t)\Delta \\ x(0) := 1 \end{array} \right)$$

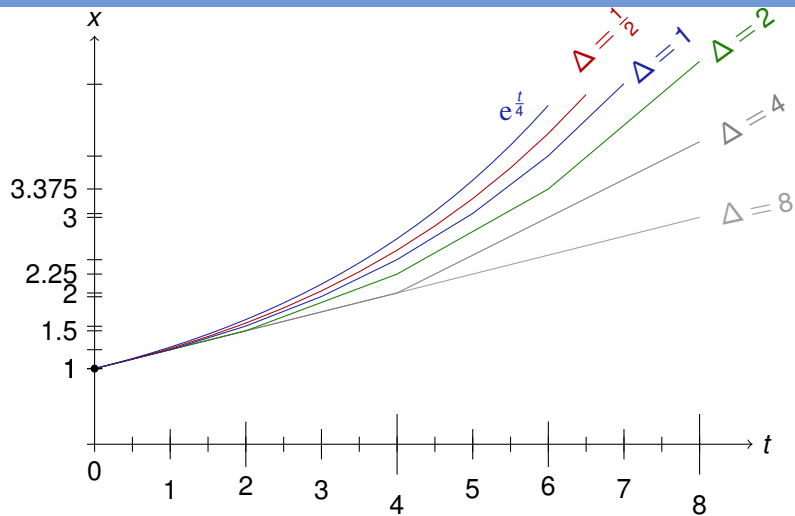


$$\left(\begin{array}{l} x'(t) = \frac{1}{4}x(t) \\ x(0) = 1 \end{array} \right) \rightsquigarrow \left(\begin{array}{l} x(t+\Delta) := x(t) + \frac{1}{4}x(t)\Delta \\ x(0) := 1 \end{array} \right)$$

Intuition for Differential Equations



$$\left(\begin{array}{l} x'(t) = \frac{1}{4}x(t) \\ x(0) = 1 \end{array} \right) \rightsquigarrow \left(\begin{array}{l} x(t+\Delta) := x(t) + \frac{1}{4}x(t)\Delta \\ x(0) := 1 \end{array} \right)$$



$$\left(\begin{array}{l} x'(t) = \frac{1}{4}x(t) \\ x(0) = 1 \end{array} \right) \rightsquigarrow \left(\begin{array}{l} x(t+\Delta) := x(t) + \frac{1}{4}x(t)\Delta \\ x(0) := 1 \end{array} \right)$$



- 1 Learning Objectives
- 2 Introduction
- 3 Differential Equations**
- 4 Examples of Differential Equations
- 5 Domains of Differential Equations
 - Terms
 - First-Order Formulas
 - Continuous Programs
- 6 Summary

- 1 What exactly is a vector field?
- 2 What does it mean to describe directions of evolution at *every* point in space?
- 3 Could these directions possibly contradict each other?

Importance of meaning

The physical impacts of CPSs do not leave much room for failure. We immediately want to get into the habit of studying the behavior and exact meaning of all relevant aspects of CPS.

Definition (Ordinary Differential Equation, ODE)

$f : D \rightarrow \mathbb{R}^n$ on domain $D \subseteq \mathbb{R} \times \mathbb{R}^n$ (i.e., open connected set). Then $Y : I \rightarrow \mathbb{R}^n$ is *solution* of initial value problem (IVP)

$$\begin{cases} y'(t) = f(t, y) \\ y(t_0) = y_0 \end{cases}$$

on the interval $I \subseteq \mathbb{R}$, iff, for all times $t \in I$,

Definition (Ordinary Differential Equation, ODE)

$f : D \rightarrow \mathbb{R}^n$ on domain $D \subseteq \mathbb{R} \times \mathbb{R}^n$ (i.e., open connected set). Then $Y : I \rightarrow \mathbb{R}^n$ is *solution* of initial value problem (IVP)

$$\begin{cases} y'(t) = f(t, y) \\ y(t_0) = y_0 \end{cases}$$

on the interval $I \subseteq \mathbb{R}$, iff, for all times $t \in I$,

- 1 defined $(t, Y(t)) \in D$

Definition (Ordinary Differential Equation, ODE)

$f : D \rightarrow \mathbb{R}^n$ on domain $D \subseteq \mathbb{R} \times \mathbb{R}^n$ (i.e., open connected set). Then $Y : I \rightarrow \mathbb{R}^n$ is *solution* of initial value problem (IVP)

$$\begin{cases} y'(t) = f(t, y) \\ y(t_0) = y_0 \end{cases}$$

on the interval $I \subseteq \mathbb{R}$, iff, for all times $t \in I$,

- 1 defined $(t, Y(t)) \in D$
- 2 time-derivative $Y'(t)$ exists and satisfies $Y'(t) = f(t, Y(t))$.

Definition (Ordinary Differential Equation, ODE)

$f : D \rightarrow \mathbb{R}^n$ on domain $D \subseteq \mathbb{R} \times \mathbb{R}^n$ (i.e., open connected set). Then $Y : I \rightarrow \mathbb{R}^n$ is *solution* of initial value problem (IVP)

$$\begin{cases} y'(t) = f(t, y) \\ y(t_0) = y_0 \end{cases}$$

on the interval $I \subseteq \mathbb{R}$, iff, for all times $t \in I$,

- 1 defined $(t, Y(t)) \in D$
- 2 time-derivative $Y'(t)$ exists and satisfies $Y'(t) = f(t, Y(t))$.
- 3 initial value $Y(t_0) = y_0$

Definition (Ordinary Differential Equation, ODE)

$f : D \rightarrow \mathbb{R}^n$ on domain $D \subseteq \mathbb{R} \times \mathbb{R}^n$ (i.e., open connected set). Then $Y : I \rightarrow \mathbb{R}^n$ is *solution* of initial value problem (IVP)

$$\begin{cases} y'(t) = f(t, y) \\ y(t_0) = y_0 \end{cases}$$

on the interval $I \subseteq \mathbb{R}$, iff, for all times $t \in I$,

- 1 defined $(t, Y(t)) \in D$
- 2 time-derivative $Y'(t)$ exists and satisfies $Y'(t) = f(t, Y(t))$.
- 3 initial value $Y(t_0) = y_0$

If $f \in C(D, \mathbb{R}^n)$, then $Y \in C^1(I, \mathbb{R}^n)$.

If f continuous, then Y continuously differentiable.



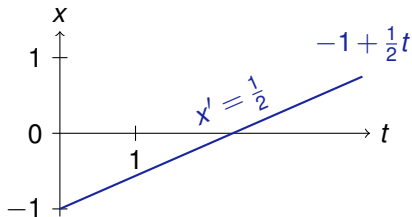
- 1 Learning Objectives
- 2 Introduction
- 3 Differential Equations
- 4 Examples of Differential Equations**
- 5 Domains of Differential Equations
 - Terms
 - First-Order Formulas
 - Continuous Programs
- 6 Summary

Example (Initial value problem)

$$\begin{pmatrix} x'(t) = \frac{1}{2} \\ x(0) = -1 \end{pmatrix} \text{ has a solution}$$

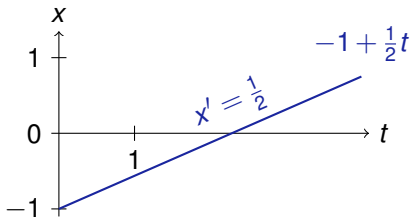
Example (Initial value problem)

$$\begin{cases} x'(t) = \frac{1}{2} \\ x(0) = -1 \end{cases} \text{ has a solution } x(t) = \frac{1}{2}t - 1$$



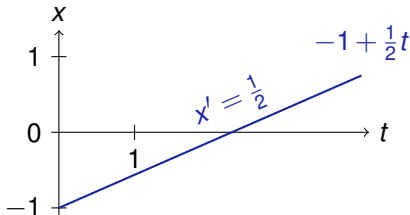
Example (Initial value problem)

$$\begin{cases} x'(t) = \frac{1}{2} \\ x(0) = -1 \end{cases} \text{ has a solution } x(t) = \frac{1}{2}t - 1$$



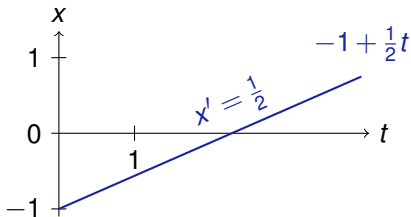
Example (Initial value problem)

$$\begin{cases} x'(t) = \frac{1}{2} \\ x(0) = -1 \end{cases} \text{ has a solution } x(t) = \frac{1}{2}t - 1$$



Example (Initial value problem)

$$\begin{cases} x'(t) = \frac{1}{2} \\ x(0) = -1 \end{cases} \text{ has a solution } x(t) = \frac{1}{2}t - 1$$





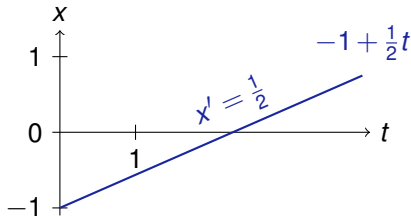
Example: A Constant Differential Equation

Example (Initial value problem)

$$\begin{pmatrix} x'(t) = \frac{1}{2} \\ x(0) = -1 \end{pmatrix} \text{ has a solution } x(t) = \frac{1}{2}t - 1$$

Check by inserting solution into ODE+IVP.

$$\begin{pmatrix} (x(t))' = (\frac{1}{2}t - 1)' = \frac{1}{2} \\ x(0) = \frac{1}{2} \cdot 0 - 1 = -1 \end{pmatrix}$$



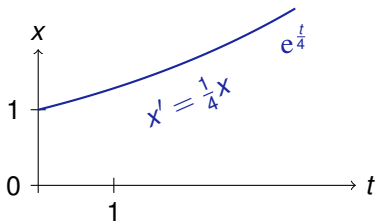


Example (Initial value problem)

$$\begin{pmatrix} x'(t) = \frac{1}{4}x(t) \\ x(0) = 1 \end{pmatrix} \text{ has a solution}$$

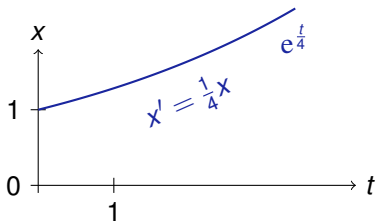
Example (Initial value problem)

$$\begin{cases} x'(t) = \frac{1}{4}x(t) \\ x(0) = 1 \end{cases} \quad \text{has a solution } x(t) = e^{\frac{t}{4}}$$



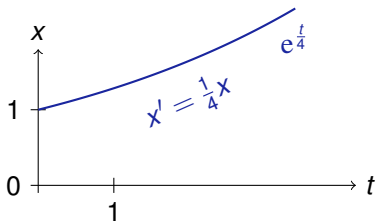
Example (Initial value problem)

$$\begin{cases} x'(t) = \frac{1}{4}x(t) \\ x(0) = 1 \end{cases} \quad \text{has a solution } x(t) = e^{\frac{t}{4}}$$



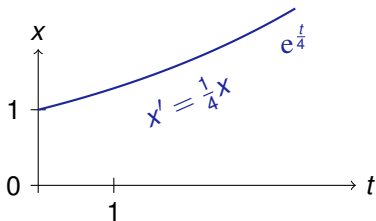
Example (Initial value problem)

$$\begin{cases} x'(t) = \frac{1}{4}x(t) \\ x(0) = 1 \end{cases} \quad \text{has a solution } x(t) = e^{\frac{t}{4}}$$



Example (Initial value problem)

$$\begin{cases} x'(t) = \frac{1}{4}x(t) \\ x(0) = 1 \end{cases} \quad \text{has a solution } x(t) = e^{\frac{t}{4}}$$

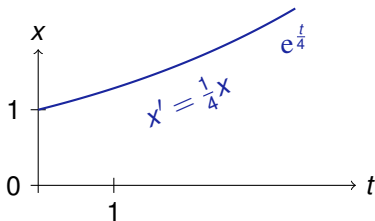


Example (Initial value problem)

$$\begin{cases} x'(t) = \frac{1}{4}x(t) \\ x(0) = 1 \end{cases} \quad \text{has a solution } x(t) = e^{\frac{t}{4}}$$

Check by inserting solution into ODE+IVP.

$$\begin{cases} (x(t))' = (e^{\frac{t}{4}})' = e^{\frac{t}{4}}(\frac{t}{4})' = e^{\frac{t}{4}}\frac{1}{4} = \frac{1}{4}x(t) \\ x(0) = e^{\frac{0}{4}} = 1 \end{cases}$$

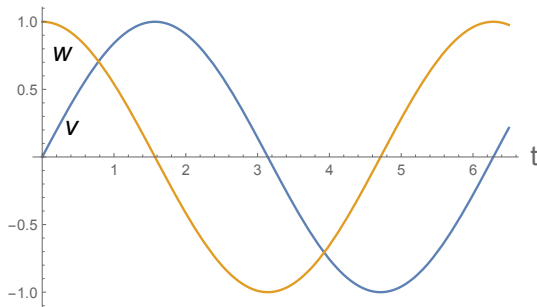
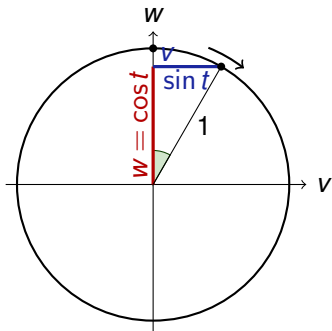


Example (Initial value problem)

$$\begin{pmatrix} v'(t) = w(t) \\ w'(t) = -v(t) \\ v(0) = 0 \\ w(0) = 1 \end{pmatrix} \text{ has solution}$$

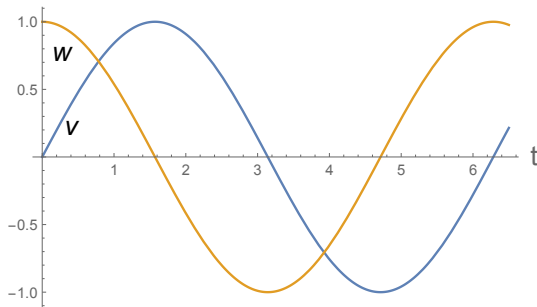
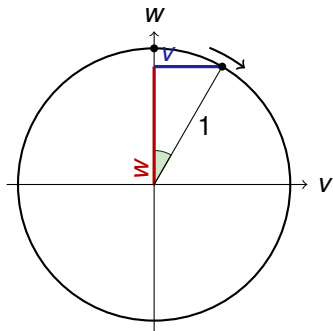
Example (Initial value problem)

$$\begin{pmatrix} v'(t) = w(t) \\ w'(t) = -v(t) \\ v(0) = 0 \\ w(0) = 1 \end{pmatrix} \quad \text{has solution} \quad \begin{pmatrix} v(t) = \sin(t) \\ w(t) = \cos(t) \end{pmatrix}$$



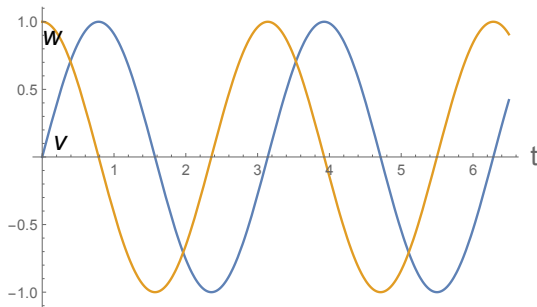
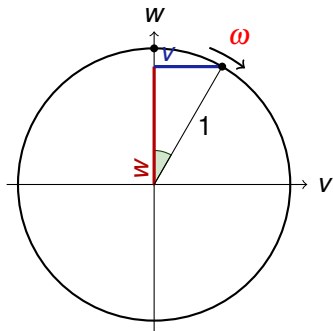
Example (Initial value problem)

$$\begin{cases} v'(t) = \omega w(t) \\ w'(t) = -\omega v(t) \\ v(0) = 0 \\ w(0) = 1 \end{cases} \quad \text{has solution}$$



Example (Initial value problem)

$$\begin{pmatrix} v'(t) = \omega w(t) \\ w'(t) = -\omega v(t) \\ v(0) = 0 \\ w(0) = 1 \end{pmatrix} \quad \text{has solution} \quad \begin{pmatrix} v(t) = \sin(\omega t) \\ w(t) = \cos(\omega t) \end{pmatrix}$$

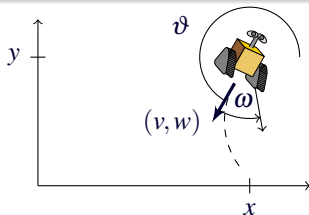


Example (Initial value problem)

$$\begin{pmatrix} x'(t) = v(t) \\ y'(t) = w(t) \\ v'(t) = \omega w(t) \\ w'(t) = -\omega v(t) \\ x(0) = x_0 \\ y(0) = y_0 \\ v(0) = v_0 \\ w(0) = w_0 \end{pmatrix}$$

Example (Initial value problem)

$$\begin{pmatrix} x'(t) = v(t) \\ y'(t) = w(t) \\ v'(t) = \omega w(t) \\ w'(t) = -\omega v(t) \\ x(0) = x_0 \\ y(0) = y_0 \\ v(0) = v_0 \\ w(0) = w_0 \end{pmatrix}$$



ODE	Solution
$x' = 1, x(0) = x_0$	$x(t) = x_0 + t$
$x' = 5, x(0) = x_0$	$x(t) = x_0 + 5t$
$x' = x, x(0) = x_0$	$x(t) = x_0 e^t$
$x' = x^2, x(0) = x_0$	$x(t) = \frac{x_0}{1 - tx_0}$
$x' = \frac{1}{x}, x(0) = 1$	$x(t) = \sqrt{1 + 2t} \dots$
$y'(x) = -2xy, y(0) = 1$	$y(x) = e^{-x^2}$
$x'(t) = tx, x(0) = x_0$	$x(t) = x_0 e^{\frac{t^2}{2}}$
$x' = \sqrt{x}, x(0) = x_0$	$x(t) = \frac{t^2}{4} \pm t\sqrt{x_0} + x_0$
$x' = y, y' = -x, x(0) = 0, y(0) = 1$	$x(t) = \sin t, y(t) = \cos t$
$x' = 1 + x^2, x(0) = 0$	$x(t) = \tan t$
$x'(t) = \frac{2}{t^3} x(t)$	$x(t) = e^{-\frac{1}{t^2}}$ non-analytic
$x' = x^2 + x^4$???
$x'(t) = e^{t^2}$	non-elementary



ODE	Solution
$x' = 1, x(0) = x_0$	$x(t) = x_0 + t$
$x' = 5, x(0) = x_0$	$x(t) = x_0 + 5t$
$x' = x, x(0) = x_0$	$x(t) = x_0 e^t$
$x' = x^2, x(0) = x_0$	$x(t) = \frac{x_0}{1 - tx_0}$
$x' = \frac{1}{x}, x(0) = 1$	$x(t) = \sqrt{1 + 2t} \dots$
$y'(x) = -2xy, y(0) = 1$	$y(x) = e^{-x^2}$
$x'(t) = tx, x(0) = x_0$	$x(t) = x_0 e^{\frac{t^2}{2}}$
$x' = \sqrt{x}, x(0) = x_0$	$x(t) = \frac{t^2}{4} \pm t\sqrt{x_0} + x_0$
$x' = y, y' = -x, x(0) = 0, y(0) = 1$	$x(t) = \sin t, y(t) = \cos t$
$x' = 1 + x^2, x(0) = 0$	$x(t) = \tan t$
$x'(t) = \frac{2}{t^3} x(t)$	$x(t) = e^{-\frac{1}{t^2}}$ non-analytic
$x' = x^2 + x^4$???
$x'(t) = e^{t^2}$	non-elementary

Descriptive power of differential equations

- 1 Solutions of differential equations can be much more involved than the differential equations themselves.
- 2 Representational and descriptive power of differential equations!
- 3 Simple differential equations can describe quite complicated physical processes.
- 4 Local description as the direction into which the system evolves.



- 1 Learning Objectives
- 2 Introduction
- 3 Differential Equations
- 4 Examples of Differential Equations
- 5 Domains of Differential Equations**
 - Terms
 - First-Order Formulas
 - Continuous Programs
- 6 Summary

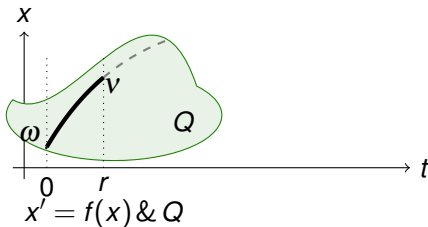
Enable Cyber to interact with Physics

Definition (Evolution domain constraints)

A differential equation $x' = f(x)$ with evolution domain Q is denoted by

$$x' = f(x) \& Q$$

conjunctive notation (&) signifies that the system obeys the differential equation $x' = f(x)$ **and** the evolution domain Q .



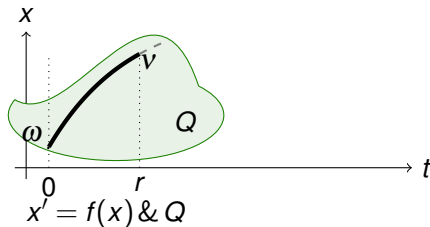
Enable Cyber to interact with Physics

Definition (Evolution domain constraints)

A differential equation $x' = f(x)$ with evolution domain Q is denoted by

$$x' = f(x) \& Q$$

conjunctive notation ($\&$) signifies that the system obeys the differential equation $x' = f(x)$ **and** the evolution domain Q .



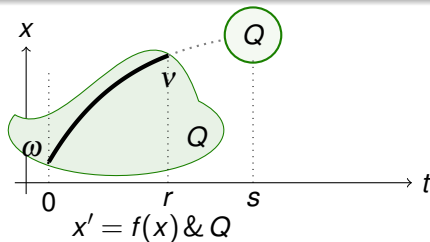
Enable Cyber to interact with Physics

Definition (Evolution domain constraints)

A differential equation $x' = f(x)$ with evolution domain Q is denoted by

$$x' = f(x) \& Q$$

conjunctive notation (&) signifies that the system obeys the differential equation $x' = f(x)$ **and** the evolution domain Q .



Enable Cyber to interact with Physics

Definition (Evolution domain constraints)

A differential equation $x' = f(x)$ with evolution domain Q is denoted by

$$x' = f(x) \& Q$$

conjunctive notation ($\&$) signifies that the system obeys the differential equation $x' = f(x)$ **and** the evolution domain Q .

$$x' = v, v' = a, t' = 1 \& t \leq \varepsilon$$

stops at clock ε at the latest

$$x' = v, v' = a, t' = 1 \& v \geq 0$$

stops before velocity negative

$$x' = y, y' = x + y^2 \& \text{true}$$

no constraint

Define:
Terms

Define:
Formulas

From Cyber to interact with Physics

Definition (Evolution domain constraints)

A differential equation $x' = f(x)$ with evolution domain Q is denoted by

$$x' = f(x) \& Q$$

conjunctive notation ($\&$) signifies that the system obeys the differential equation $x' = f(x)$ **and** the evolution domain Q .

$$x' = v, v' = a, t' = 1 \& t \leq \varepsilon$$

stops at clock ε at the latest

$$x' = v, v' = a, t' = 1 \& v \geq 0$$

stops before velocity negative

$$x' = y, y' = x + y^2 \& \text{true}$$

no constraint



Definition (Syntax of terms)

A *term* e is a polynomial term defined by the grammar:

$$e, \tilde{e} ::= x \mid c \mid e + \tilde{e} \mid e \cdot \tilde{e}$$

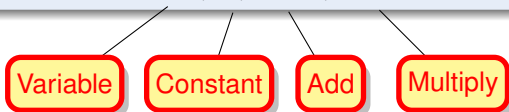
where e, \tilde{e} are terms, $x \in \mathcal{V}$ is a variable, $c \in \mathbb{Q}$ a rational number constant



Definition (Syntax of terms)

A *term* e is a polynomial term defined by the grammar:

$$e, \tilde{e} ::= x \mid c \mid e + \tilde{e} \mid e \cdot \tilde{e}$$



Definition (Syntax of terms)

A *term* e is a polynomial term defined by the grammar:

$$e, \tilde{e} ::= x \mid c \mid e + \tilde{e} \mid e \cdot \tilde{e}$$

Definition (Semantics of terms)

$$(\llbracket \cdot \rrbracket : \text{Trm} \rightarrow (\mathcal{S} \rightarrow \mathbb{R}))$$

The *value of term* e in state $\omega : \mathcal{V} \rightarrow \mathbb{R}$ is a real number denoted $\omega \llbracket e \rrbracket$ and is defined by induction on the structure of e :

$$\omega \llbracket x \rrbracket = \omega(x) \quad \text{if } x \in \mathcal{V} \text{ is a variable}$$

$$\omega \llbracket c \rrbracket = c \quad \text{if } c \in \mathbb{Q} \text{ is a rational constant}$$

$$\omega \llbracket e + \tilde{e} \rrbracket = \omega \llbracket e \rrbracket + \omega \llbracket \tilde{e} \rrbracket \quad \text{addition of reals}$$

$$\omega \llbracket e \cdot \tilde{e} \rrbracket = \omega \llbracket e \rrbracket \cdot \omega \llbracket \tilde{e} \rrbracket \quad \text{multiplication of reals}$$

Definition (Syntax of terms)

A *term* e is a polynomial term defined by the grammar:

$$e, \tilde{e} ::= x \mid c \mid e + \tilde{e} \mid e \cdot \tilde{e}$$

Definition (Semantics of terms)

$$(\llbracket \cdot \rrbracket : \text{Trm} \rightarrow (\mathcal{V} \rightarrow \mathbb{R}))$$

The *value of term* e in state $\omega : \mathcal{V} \rightarrow \mathbb{R}$ is a real number denoted $\omega \llbracket e \rrbracket$ and is defined by induction on the structure of e :

$\omega \llbracket x \rrbracket = \omega(x)$	if $x \in \mathcal{V}$ is a variable
$\omega \llbracket c \rrbracket = c$	if $c \in \mathbb{Q}$ is a rational constant
$\omega \llbracket e + \tilde{e} \rrbracket = \omega \llbracket e \rrbracket + \omega \llbracket \tilde{e} \rrbracket$	addition of reals
$\omega \llbracket e \cdot \tilde{e} \rrbracket = \omega \llbracket e \rrbracket \cdot \omega \llbracket \tilde{e} \rrbracket$	multiplication of reals

$$\omega \llbracket 4 + x \cdot 2 \rrbracket =$$

$$\text{if } \omega(x) = 5$$

Definition (Syntax of terms)

A *term* e is a polynomial term defined by the grammar:

$$e, \tilde{e} ::= x \mid c \mid e + \tilde{e} \mid e \cdot \tilde{e}$$

Definition (Semantics of terms)

$$([\cdot]) : \text{Trm} \rightarrow (\mathcal{V} \rightarrow \mathbb{R})$$

The *value of term* e in state $\omega : \mathcal{V} \rightarrow \mathbb{R}$ is a real number denoted $\omega[e]$ and is defined by induction on the structure of e :

$\omega[x] = \omega(x)$	if $x \in \mathcal{V}$ is a variable
$\omega[c] = c$	if $c \in \mathbb{Q}$ is a rational constant
$\omega[e + \tilde{e}] = \omega[e] + \omega[\tilde{e}]$	addition of reals
$\omega[e \cdot \tilde{e}] = \omega[e] \cdot \omega[\tilde{e}]$	multiplication of reals

$$\omega[4 + x \cdot 2] = \omega[4] + \omega[x] \cdot \omega[2] = 4 + \omega(x) \cdot 2 = 14 \quad \text{if } \omega(x) = 5$$

Definition (Syntax of terms)

A *term* e is a polynomial term defined by the grammar:

$$e, \tilde{e} ::= x \mid c \mid e + \tilde{e} \mid e \cdot \tilde{e}$$

Definition (Semantics of terms)

$$(\llbracket \cdot \rrbracket : \text{Trm} \rightarrow (\mathcal{S} \rightarrow \mathbb{R}))$$

The *value of term* e in state $\omega : \mathcal{V} \rightarrow \mathbb{R}$ is a real number denoted $\omega \llbracket e \rrbracket$ and is defined by induction on the structure of e :

$$\omega \llbracket x \rrbracket = \omega(x) \quad \text{if } x \in \mathcal{V} \text{ is a variable}$$

$$\omega \llbracket c \rrbracket = c \quad \text{if } c \in \mathbb{Q} \text{ is a rational constant}$$

$$\omega \llbracket e + \tilde{e} \rrbracket = \omega \llbracket e \rrbracket + \omega \llbracket \tilde{e} \rrbracket \quad \text{addition of reals}$$

$$\omega \llbracket e \cdot \tilde{e} \rrbracket = \omega \llbracket e \rrbracket \cdot \omega \llbracket \tilde{e} \rrbracket \quad \text{multiplication of reals}$$

What about $x - y$?

Definition (Syntax of terms)

A *term* e is a polynomial term defined by the grammar:

$$e, \tilde{e} ::= x \mid c \mid e + \tilde{e} \mid e \cdot \tilde{e}$$

Definition (Semantics of terms)

$$(\llbracket \cdot \rrbracket : \text{Trm} \rightarrow (\mathcal{V} \rightarrow \mathbb{R}))$$

The *value of term* e in state $\omega : \mathcal{V} \rightarrow \mathbb{R}$ is a real number denoted $\omega \llbracket e \rrbracket$ and is defined by induction on the structure of e :

$$\omega \llbracket x \rrbracket = \omega(x) \quad \text{if } x \in \mathcal{V} \text{ is a variable}$$

$$\omega \llbracket c \rrbracket = c \quad \text{if } c \in \mathbb{Q} \text{ is a rational constant}$$

$$\omega \llbracket e + \tilde{e} \rrbracket = \omega \llbracket e \rrbracket + \omega \llbracket \tilde{e} \rrbracket \quad \text{addition of reals}$$

$$\omega \llbracket e \cdot \tilde{e} \rrbracket = \omega \llbracket e \rrbracket \cdot \omega \llbracket \tilde{e} \rrbracket \quad \text{multiplication of reals}$$

What about $x - y$? Defined as $x + (-1) \cdot y$

Definition (Syntax of terms)

A *term* e is a polynomial term defined by the grammar:

$$e, \tilde{e} ::= x \mid c \mid e + \tilde{e} \mid e \cdot \tilde{e}$$

Definition (Semantics of terms)

$$(\llbracket \cdot \rrbracket : \text{Trm} \rightarrow (\mathcal{S} \rightarrow \mathbb{R}))$$

The *value of term* e in state $\omega : \mathcal{V} \rightarrow \mathbb{R}$ is a real number denoted $\omega \llbracket e \rrbracket$ and is defined by induction on the structure of e :

$$\omega \llbracket x \rrbracket = \omega(x) \quad \text{if } x \in \mathcal{V} \text{ is a variable}$$

$$\omega \llbracket c \rrbracket = c \quad \text{if } c \in \mathbb{Q} \text{ is a rational constant}$$

$$\omega \llbracket e + \tilde{e} \rrbracket = \omega \llbracket e \rrbracket + \omega \llbracket \tilde{e} \rrbracket \quad \text{addition of reals}$$

$$\omega \llbracket e \cdot \tilde{e} \rrbracket = \omega \llbracket e \rrbracket \cdot \omega \llbracket \tilde{e} \rrbracket \quad \text{multiplication of reals}$$

What about x^4 ?

Definition (Syntax of terms)

A *term* e is a polynomial term defined by the grammar:

$$e, \tilde{e} ::= x \mid c \mid e + \tilde{e} \mid e \cdot \tilde{e}$$

Definition (Semantics of terms)

$$(\llbracket \cdot \rrbracket : \text{Trm} \rightarrow (\mathcal{V} \rightarrow \mathbb{R}))$$

The *value of term* e in state $\omega : \mathcal{V} \rightarrow \mathbb{R}$ is a real number denoted $\omega \llbracket e \rrbracket$ and is defined by induction on the structure of e :

$$\omega \llbracket x \rrbracket = \omega(x) \quad \text{if } x \in \mathcal{V} \text{ is a variable}$$

$$\omega \llbracket c \rrbracket = c \quad \text{if } c \in \mathbb{Q} \text{ is a rational constant}$$

$$\omega \llbracket e + \tilde{e} \rrbracket = \omega \llbracket e \rrbracket + \omega \llbracket \tilde{e} \rrbracket \quad \text{addition of reals}$$

$$\omega \llbracket e \cdot \tilde{e} \rrbracket = \omega \llbracket e \rrbracket \cdot \omega \llbracket \tilde{e} \rrbracket \quad \text{multiplication of reals}$$

What about x^4 ? Defined as $x \cdot x \cdot x \cdot x$

Definition (Syntax of terms)

A *term* e is a polynomial term defined by the grammar:

$$e, \tilde{e} ::= x \mid c \mid e + \tilde{e} \mid e \cdot \tilde{e}$$

Definition (Semantics of terms)

$$(\llbracket \cdot \rrbracket : \text{Trm} \rightarrow (\mathcal{S} \rightarrow \mathbb{R}))$$

The *value of term* e in state $\omega : \mathcal{V} \rightarrow \mathbb{R}$ is a real number denoted $\omega \llbracket e \rrbracket$ and is defined by induction on the structure of e :

$$\omega \llbracket x \rrbracket = \omega(x) \quad \text{if } x \in \mathcal{V} \text{ is a variable}$$

$$\omega \llbracket c \rrbracket = c \quad \text{if } c \in \mathbb{Q} \text{ is a rational constant}$$

$$\omega \llbracket e + \tilde{e} \rrbracket = \omega \llbracket e \rrbracket + \omega \llbracket \tilde{e} \rrbracket \quad \text{addition of reals}$$

$$\omega \llbracket e \cdot \tilde{e} \rrbracket = \omega \llbracket e \rrbracket \cdot \omega \llbracket \tilde{e} \rrbracket \quad \text{multiplication of reals}$$

What about x^n ?

Definition (Syntax of terms)

A *term* e is a polynomial term defined by the grammar:

$$e, \tilde{e} ::= x \mid c \mid e + \tilde{e} \mid e \cdot \tilde{e}$$

Definition (Semantics of terms)

$$([\cdot] : \text{Trm} \rightarrow (\mathcal{V} \rightarrow \mathbb{R}))$$

The *value of term* e in state $\omega : \mathcal{V} \rightarrow \mathbb{R}$ is a real number denoted $\omega[e]$ and is defined by induction on the structure of e :

$\omega[x] = \omega(x)$	if $x \in \mathcal{V}$ is a variable
$\omega[c] = c$	if $c \in \mathbb{Q}$ is a rational constant
$\omega[e + \tilde{e}] = \omega[e] + \omega[\tilde{e}]$	addition of reals
$\omega[e \cdot \tilde{e}] = \omega[e] \cdot \omega[\tilde{e}]$	multiplication of reals

What about x^n ? Defined as $x \cdot x \cdot x \cdot x \cdot x \cdot \dots$, wait when do we stop???

Definition (Syntax of first-order logic formulas)

The *formulas of FOL of real arithmetic* are defined by the grammar:

$$P, Q ::= e \geq \tilde{e} \mid e = \tilde{e} \mid \neg P \mid P \wedge Q \mid P \vee Q \mid P \rightarrow Q \mid P \leftrightarrow Q \mid \forall x P \mid \exists x P$$

Definition (Syntax of first-order logic formulas)

The *formulas of FOL of real arithmetic* are defined by the grammar:

$P, Q ::= e \geq \tilde{e} \mid e = \tilde{e} \mid \neg P \mid P \wedge Q \mid P \vee Q \mid P \rightarrow Q \mid P \leftrightarrow Q \mid \forall x P \mid \exists x P$

Greater-or-equal

Not

And

Or

Imply

Equiv

All

Exists

Definition (Syntax of first-order logic formulas)

The *formulas of FOL of real arithmetic* are defined by the grammar:

$$P, Q ::= e \geq \tilde{e} \mid e = \tilde{e} \mid \neg P \mid P \wedge Q \mid P \vee Q \mid P \rightarrow Q \mid P \leftrightarrow Q \mid \forall x P \mid \exists x P$$

Definition (Semantics of first-order logic formulas)

First-order formula P is true in state ω , written $\omega \models P$, defined inductively:

$$\omega \models e = \tilde{e} \quad \text{iff } \omega[e] = \omega[\tilde{e}]$$

$$\omega \models e \geq \tilde{e} \quad \text{iff } \omega[e] \geq \omega[\tilde{e}]$$

$$\omega \models \neg P \quad \text{iff } \omega \not\models P, \text{ i.e., if it is not the case that } \omega \models P$$

$$\omega \models P \wedge Q \quad \text{iff } \omega \models P \text{ and } \omega \models Q$$

$$\omega \models P \vee Q \quad \text{iff } \omega \models P \text{ or } \omega \models Q$$

$$\omega \models P \rightarrow Q \quad \text{iff } \omega \not\models P \text{ or } \omega \models Q$$

$$\omega \models \forall x P \quad \text{iff } \omega_x^d \models P \text{ for all } d \in \mathbb{R}$$

$$\omega \models \exists x P \quad \text{iff } \omega_x^d \models P \text{ for some } d \in \mathbb{R}$$

$$\omega_x^d(y) = \begin{cases} d & \text{if } y=x \\ \omega(y) & \text{if } y \neq x \end{cases}$$

$\omega \models P$ formula P is true in state ω

$\models P$ formula P is *valid*, i.e., true in all states ω , i.e., $\omega \models P$ for all ω

$\llbracket P \rrbracket = \{ \omega : \omega \models P \}$ set of all states in which P is true

Definition (Semantics of first-order logic formulas)

First-order formula P is true in state ω , written $\omega \models P$, defined inductively:

$\omega \models e = \tilde{e}$ iff $\omega \llbracket e \rrbracket = \omega \llbracket \tilde{e} \rrbracket$

$\omega \models e \geq \tilde{e}$ iff $\omega \llbracket e \rrbracket \geq \omega \llbracket \tilde{e} \rrbracket$

$\omega \models \neg P$ iff $\omega \not\models P$, i.e., if it is not the case that $\omega \models P$

$\omega \models P \wedge Q$ iff $\omega \models P$ and $\omega \models Q$

$\omega \models P \vee Q$ iff $\omega \models P$ or $\omega \models Q$

$\omega \models P \rightarrow Q$ iff $\omega \not\models P$ or $\omega \models Q$

$\omega \models \forall x P$ iff $\omega_x^d \models P$ for all $d \in \mathbb{R}$

$\omega \models \exists x P$ iff $\omega_x^d \models P$ for some $d \in \mathbb{R}$

$$\omega_x^d(y) = \begin{cases} d & \text{if } y=x \\ \omega(y) & \text{if } y \neq x \end{cases}$$

$\omega \models P$ formula P is true in state ω

$\models P$ formula P is *valid*, i.e., true in all states ω , i.e., $\omega \models P$ for all ω

$\llbracket P \rrbracket = \{ \omega : \omega \models P \}$ set of all states in which P is true

$\exists y (y^2 \leq x)$ for $\omega(x) = 5$ and $v(x) = -5$

Definition (Semantics of first-order logic formulas)

First-order formula P is true in state ω , written $\omega \models P$, defined inductively:

$\omega \models e = \tilde{e}$ iff $\omega \llbracket e \rrbracket = \omega \llbracket \tilde{e} \rrbracket$

$\omega \models e \geq \tilde{e}$ iff $\omega \llbracket e \rrbracket \geq \omega \llbracket \tilde{e} \rrbracket$

$\omega \models \neg P$ iff $\omega \not\models P$, i.e., if it is not the case that $\omega \models P$

$\omega \models P \wedge Q$ iff $\omega \models P$ and $\omega \models Q$

$\omega \models P \vee Q$ iff $\omega \models P$ or $\omega \models Q$

$\omega \models P \rightarrow Q$ iff $\omega \not\models P$ or $\omega \models Q$

$\omega \models \forall x P$ iff $\omega_x^d \models P$ for all $d \in \mathbb{R}$

$\omega \models \exists x P$ iff $\omega_x^d \models P$ for some $d \in \mathbb{R}$

$$\omega_x^d(y) = \begin{cases} d & \text{if } y=x \\ \omega(y) & \text{if } y \neq x \end{cases}$$

$\omega \models P$ formula P is true in state ω

$\models P$ formula P is *valid*, i.e., true in all states ω , i.e., $\omega \models P$ for all ω

$\llbracket P \rrbracket = \{ \omega : \omega \models P \}$ set of all states in which P is true

$\omega \models \exists y (y^2 \leq x)$ but $v \not\models \exists y (y^2 \leq x)$ for $\omega(x) = 5$ and $v(x) = -5$

Definition (Semantics of first-order logic formulas)

First-order formula P is true in state ω , written $\omega \models P$, defined inductively:

$\omega \models e = \tilde{e}$ iff $\omega \llbracket e \rrbracket = \omega \llbracket \tilde{e} \rrbracket$

$\omega \models e \geq \tilde{e}$ iff $\omega \llbracket e \rrbracket \geq \omega \llbracket \tilde{e} \rrbracket$

$\omega \models \neg P$ iff $\omega \not\models P$, i.e., if it is not the case that $\omega \models P$

$\omega \models P \wedge Q$ iff $\omega \models P$ and $\omega \models Q$

$\omega \models P \vee Q$ iff $\omega \models P$ or $\omega \models Q$

$\omega \models P \rightarrow Q$ iff $\omega \not\models P$ or $\omega \models Q$

$\omega \models \forall x P$ iff $\omega_x^d \models P$ for all $d \in \mathbb{R}$

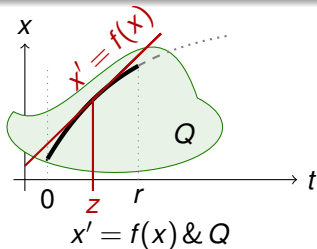
$\omega \models \exists x P$ iff $\omega_x^d \models P$ for some $d \in \mathbb{R}$

$$\omega_x^d(y) = \begin{cases} d & \text{if } y=x \\ \omega(y) & \text{if } y \neq x \end{cases}$$

Definition (Semantics of differential equations)

A function $\varphi : [0, r] \rightarrow \mathcal{S}$ of some duration $r \geq 0$ satisfies the differential equation $x' = f(x) \& Q$, written $\varphi \models x' = f(x) \wedge Q$, iff:

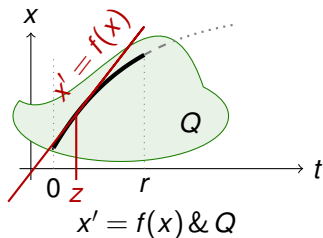
- 1 $\varphi(z)(x') = \frac{d\varphi(t)(x)}{dt}(z)$ exists at all times $0 \leq z \leq r$
- 2 $\varphi(z) \models x' = f(x) \wedge Q$ for all times $0 \leq z \leq r$
- 3 $\varphi(z) = \varphi(0)$ except at x, x'



Definition (Semantics of differential equations)

A function $\varphi : [0, r] \rightarrow \mathcal{S}$ of some duration $r \geq 0$ satisfies the differential equation $x' = f(x) \& Q$, written $\varphi \models x' = f(x) \wedge Q$, iff:

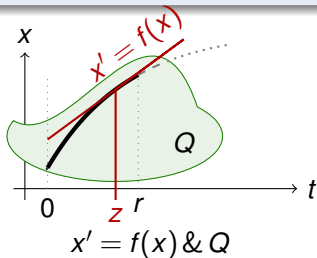
- 1 $\varphi(z)(x') = \frac{d\varphi(t)(x)}{dt}(z)$ exists at all times $0 \leq z \leq r$
- 2 $\varphi(z) \models x' = f(x) \wedge Q$ for all times $0 \leq z \leq r$
- 3 $\varphi(z) = \varphi(0)$ except at x, x'



Definition (Semantics of differential equations)

A function $\varphi : [0, r] \rightarrow \mathcal{S}$ of some duration $r \geq 0$ satisfies the differential equation $x' = f(x) \ \& \ Q$, written $\varphi \models x' = f(x) \ \& \ Q$, iff:

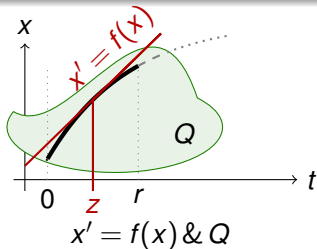
- 1 $\varphi(z)(x') = \frac{d\varphi(t)(x)}{dt}(z)$ exists at all times $0 \leq z \leq r$
- 2 $\varphi(z) \models x' = f(x) \ \& \ Q$ for all times $0 \leq z \leq r$
- 3 $\varphi(z) = \varphi(0)$ except at x, x'



Definition (Semantics of differential equations)

A function $\varphi : [0, r] \rightarrow \mathcal{S}$ of some duration $r \geq 0$ satisfies the differential equation $x' = f(x) \ \& \ Q$, written $\varphi \models x' = f(x) \ \& \ Q$, iff:

- 1 $\varphi(z)(x') = \frac{d\varphi(t)(x)}{dt}(z)$ exists at all times $0 \leq z \leq r$
- 2 $\varphi(z) \models x' = f(x) \ \& \ Q$ for all times $0 \leq z \leq r$
- 3 $\varphi(z) = \varphi(0)$ except at x, x'



- 1 Learning Objectives
- 2 Introduction
- 3 Differential Equations
- 4 Examples of Differential Equations
- 5 Domains of Differential Equations
 - Terms
 - First-Order Formulas
 - Continuous Programs
- 6 Summary

Definition (Syntax of terms)

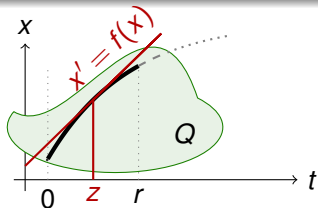
$$e, \tilde{e} ::= x \mid c \mid e + \tilde{e} \mid e \cdot \tilde{e}$$

Definition (Syntax of first-order logic formulas)

$$P, Q ::= e \geq \tilde{e} \mid e = \tilde{e} \mid \neg P \mid P \wedge Q \mid P \vee Q \mid P \rightarrow Q \mid P \leftrightarrow Q \mid \forall x P \mid \exists x P$$

Definition (Syntax of continuous programs)

A differential equation $x' = f(x)$ with evolution domain Q is denoted by

$$x' = f(x) \& Q$$




André Platzer.

Logical Foundations of Cyber-Physical Systems.

Springer, Cham, 2018.

doi:10.1007/978-3-319-63588-0.



André Platzer.

Logical Analysis of Hybrid Systems: Proving Theorems for Complex Dynamics.

Springer, Heidelberg, 2010.

doi:10.1007/978-3-642-14509-4.